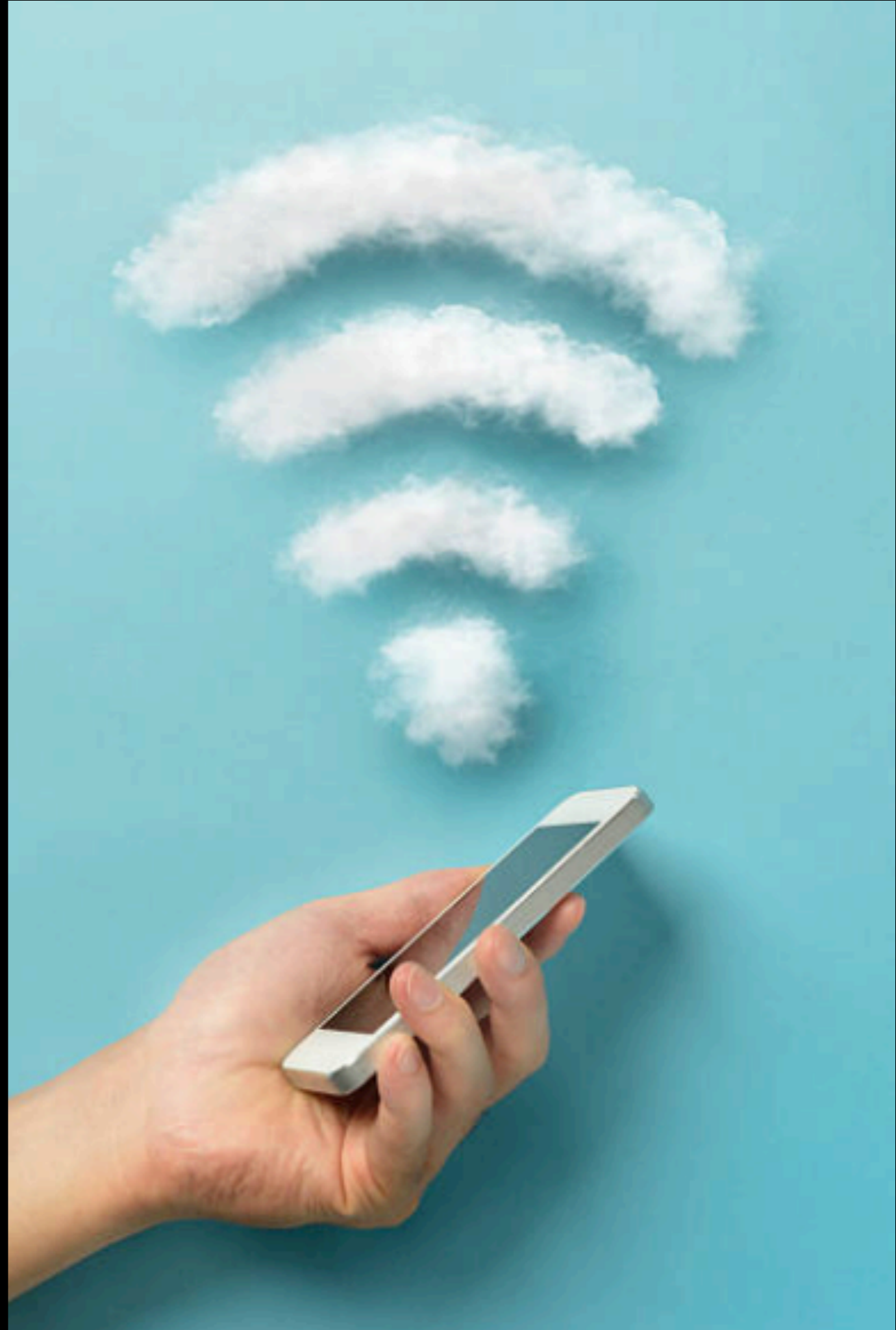


CARES ACT

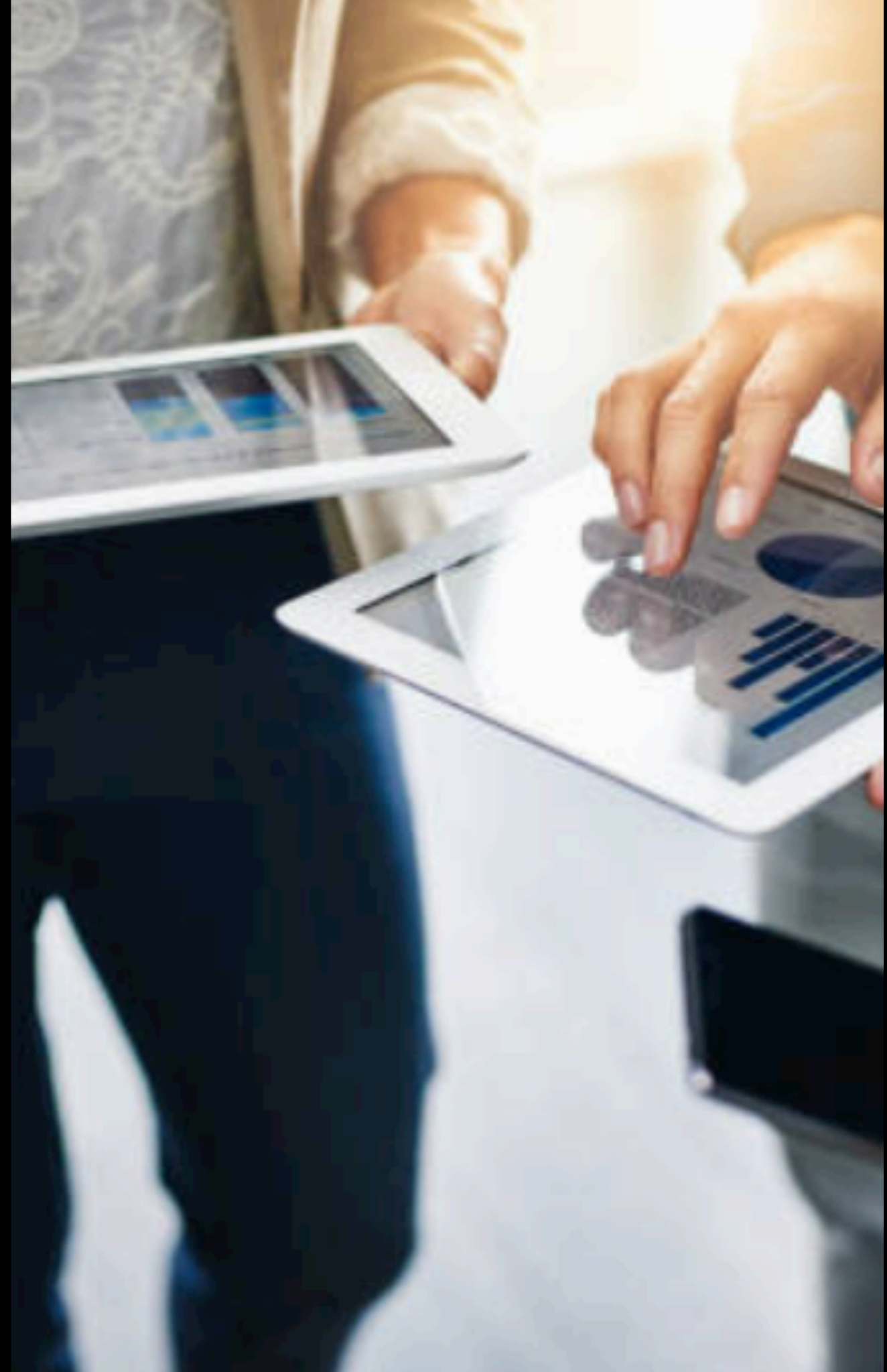
K12 WIRELESS  
IMPROVEMENTS

MEETING#7



# AGENDA

- E-rate with Jerome
- Review Dashboard
- Past due
- Priority of the week
- Issues/Risk Log
- Communications
- Q & A



# E-RATE BY JEROME

## WORKING WITH E-RATE AND THE WIFI CARES PROJECT

- Overview of e-rate funding timeline as it relates to the WiFi CARES Project
- CARES funding can and should be used to cover the non reimbursed portion of e-rate
- If you have your funding commitment letter, please continue with e-rate (don't leave e-rate funding on the table, please use it)
- If e-rate picks up a percentage of the cost of your Wifi project so you still have CARES funding available, please use it for Wireless related items (please use your CARES funding)
- Questions?



# EQUIPMENT DELIVERED

PAST DUE

- Update status
  - Partial order in = In Progress
  - Complete order in = Completed

Equip. Delivered - New (32)



OVERDUE (32)

	Equipment Delivered New Mountainville Academy	Aug 21
	Equipment Delivered New Excelsior Academy	Aug 21
	Equipment Delivered New Channing Hall	Aug 21
	Equipment Delivered New San Juan School District	Aug 21
	Equipment Delivered New Wasatch Charter School	Aug 21
	Equipment Delivered New Rural Utah Child Development	Aug 21
	Equipment Delivered New Athlos Academy	Aug 21
	Equipment Delivered New The Center for Creativity Innov...	Aug 21
	Equipment Delivered New Bear River Charter School	Aug 21
	Equipment Delivered New Ignite Entrepreneurship Academy	Aug 21
	Equipment Delivered New Walden School of Liberal Arts	Aug 21
	Equipment Delivered New South Sanpete School District	Aug 21
	Equipment Delivered New Endeavor Hall	Aug 21
	Equipment Delivered New Wasatch School District	Aug 21

# PROJECT DASHBOARD

Priority this week

15  
WEEKS  
LEFT!!!

## Equip Installed - Completed (8) ⓘ ...

- Equipment Installed & C... Sep 4  
Completed South Summit School Di...
- Equipment Installed & ... Sep 11  
Completed Academy for Math Engin...
- Equipment Installed & C... Sep 4  
Completed Soldeir Hollow Chart...
- Equipment Installed & C... Sep 4  
Completed Utah International Chart...
- Equipment Installed & C... Sep 4  
Completed Roots Charter High School
- Equipment Installed & C... Sep 4  
Completed Paradigm Schools
- Equipment Installed & C... Sep 4  
Completed Northeastern Utah E...
- Equipment Installed & C... Sep 4  
Completed Salt Lake School for the ...

## Equip Installed - In Progr... (17)

### OVERDUE (17)

- Equipment Installed & ... Sep 4  
In Progress Greenwood Charter Sc...
- Equipment Installed & ... Sep 4  
In Progress American Leadership A...
- Equipment Installed & ... Sep 4  
In Progress Monticello Academy
- Equipment Installed & ... Sep 4  
In Progress Salt Lake Arts Academy
- Equipment Installed & ... Sep 4  
In Progress Sevier School District
- Equipment Installed & ... Sep 4  
In Progress Jordan School District
- Equipment Installed & ... Sep 4  
In Progress Dixie Montessori Acad...
- Equipment Installed & ... Sep 4  
In Progress Karl G Maeser Prepara...
- Equipment Installed & ... Sep 4  
In Progress Washington County Sc...
- Equipment Installed & ... Sep 4  
In Progress Gateway Preparatory A...
- Equipment Installed & ... Sep 4  
In Progress American Preparatory ...
- Equipment Installed & ... Sep 4  
In Progress Salt Lake City School Di...

## Equip Installed - New (103)

### NEW (103)

- Equipment Installed & ... Sep 4  
New Logan City School District
- Equipment Installed & ... Sep 4  
New Mountainville Academy
- Equipment Installed & ... Sep 4  
New Millard School District
- Equipment Installed & ... Sep 4  
New Entheos Academy Kearns
- Equipment Installed & ... Sep 4  
New Entheos Academy Magna
- Equipment Installed & ... Sep 4  
New Excelsior Academy
- Equipment Installed & ... Sep 4  
New Channing Hall
- Equipment Installed & ... Sep 4  
New San Juan School District
- Equipment Installed & ... Sep 4  
New Utah County Academy of Scie...
- Equipment Installed & ... Sep 4  
New Merit Preparatory Academy
- Equipment Installed & ... Sep 4  
New C.S. Lewis Academy
- Equipment Installed & ... Sep 4  
New Bonneville Academy

K12 WIRELESS IMPROVEMENTS

HOW TO UPDATE YOUR IN WRIKE

QUESTIONS ON WRIKE?

K12 WIRELESS IMPROVEMENTS-ISSUES

BACK ORDER OF ACCESS  
POINTS/EQUIPMENT

K12 WIRELESS IMPROVEMENTS

# COMMUNICATION



# PROJECT WIKI

Find the FAQ, links, meeting presentations, meeting agenda.

The screenshot shows a web application interface for a project wiki. The top navigation bar includes the 'uen' logo, a menu icon, a red '+' button, 'Inbox', 'My to-do', a search bar, a help icon, and a user profile 'CS Country'. The left sidebar contains a 'Filter' section and a list of categories: 'Personal', 'Bookmarks', 'My to-do', 'Created by me', 'Shared with me' (with '-PROJECT WIKI' selected), 'A Training Project' (with 'Training Issues Log'), and 'Blueprints'. The main content area is titled 'Shared with me >' and '-PROJECT WIKI'. It features tabs for 'List', 'Board', 'Table', and 'Gantt Chart', with 'List' selected. Below the tabs are filters for 'All active tasks' and 'By Priority', along with a 'Leave feedback' link. The task list includes: 'Wrike Tip of the Day' (New), 'Weekly Agenda' (Dec 30, New), 'Announcements' (New), 'Weekly Meeting Presentations' (New), 'Links' (New), and 'FAQ' (New). Each task is preceded by a blue circle with a white plus sign and a person icon.

# UEN.ORG - CARES ACT K12 WIRELESS IMPROVEMENTS

## CARES Act K12 Wireless Improvements

 Meeting Videos

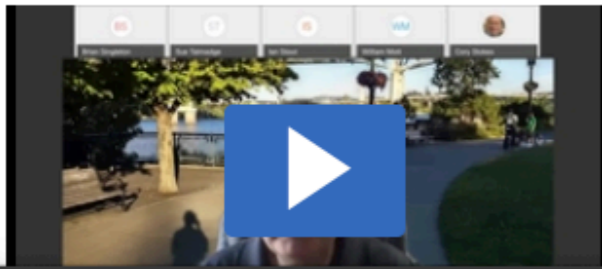
 Meeting Presentations

 FAQ

 Contact Us

### Meeting Videos

8/19/2020



8/12/2020



8/5/2020



7/23/2020



K12 WIRELESS IMPROVEMENTS

Q & A

